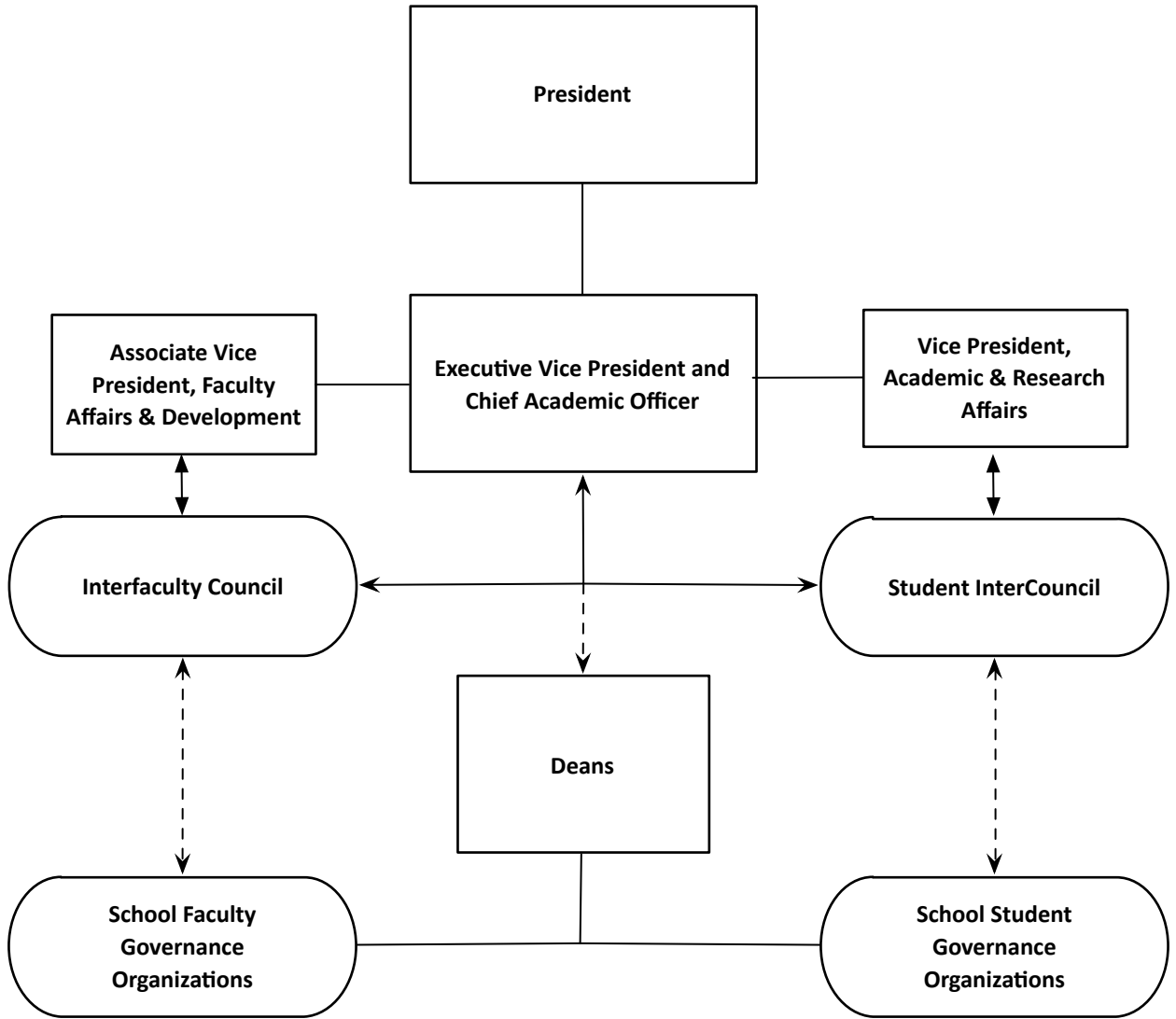


UTHealth Faculty & Student Governance



Faculty Role in Governance
includes, but not limited to:

- Academic policies and welfare
- Admission and graduation requirements
- Approval of degree candidates
- Curriculum and academic program matter
- Student life in relation to educational and professional processes
- Honors and scholastic performance
- Research opportunities and initiatives
- Faculty appointment, promotion, and tenure
- Faculty development
- Review of HOOP policies and procedures
- Other institutional concerns impacting faculty

Student Role in Governance
includes, but not limited to:

- Admission policy review
- Academic evaluation
- Curriculum and academic program review
- Academic environment and infrastructure
- Student services
- Tuition and fees
- Extracurricular activities
- Student regulations and discipline
- Student health insurance
- Review of HOOP policies and procedures
- Other institutional concerns impacting students